

# Chinon Splash GX

On line manual

If the images are too small, I may have larger,  
almost identical images, from the CE-4 camera page.

This camera manual library is for reference  
and historical purposes, all rights reserved.

This page is copyright© by [mike@butkus.org](mailto:mike@butkus.org), M. Butkus, N.J.

This page may not be sold or distributed without  
the expressed permission of the producer  
I have no connection with any camera company.

**If you find this manual useful,  
how about a donation of \$3 to:**

M. Butkus, 29 Lake Ave.,  
High Bridge, NJ 08829-1701  
and send your e-mail address  
so I can thank you.

Most other places would charge  
you \$7.50 for a electronic copy  
or \$18.00 for a hard to read Xerox copy.

This will help me to continue to host this site,  
buy new manuals, and pay their shipping costs.

**It'll make you feel better, won't it ?**

**If you use Pay Pal, use the link below.  
Use the above address for a check, M.O. or cash.**



[www.PayPal.me/butkus](http://www.PayPal.me/butkus)

Venmo @mike-butkus-camera Ph. 2083

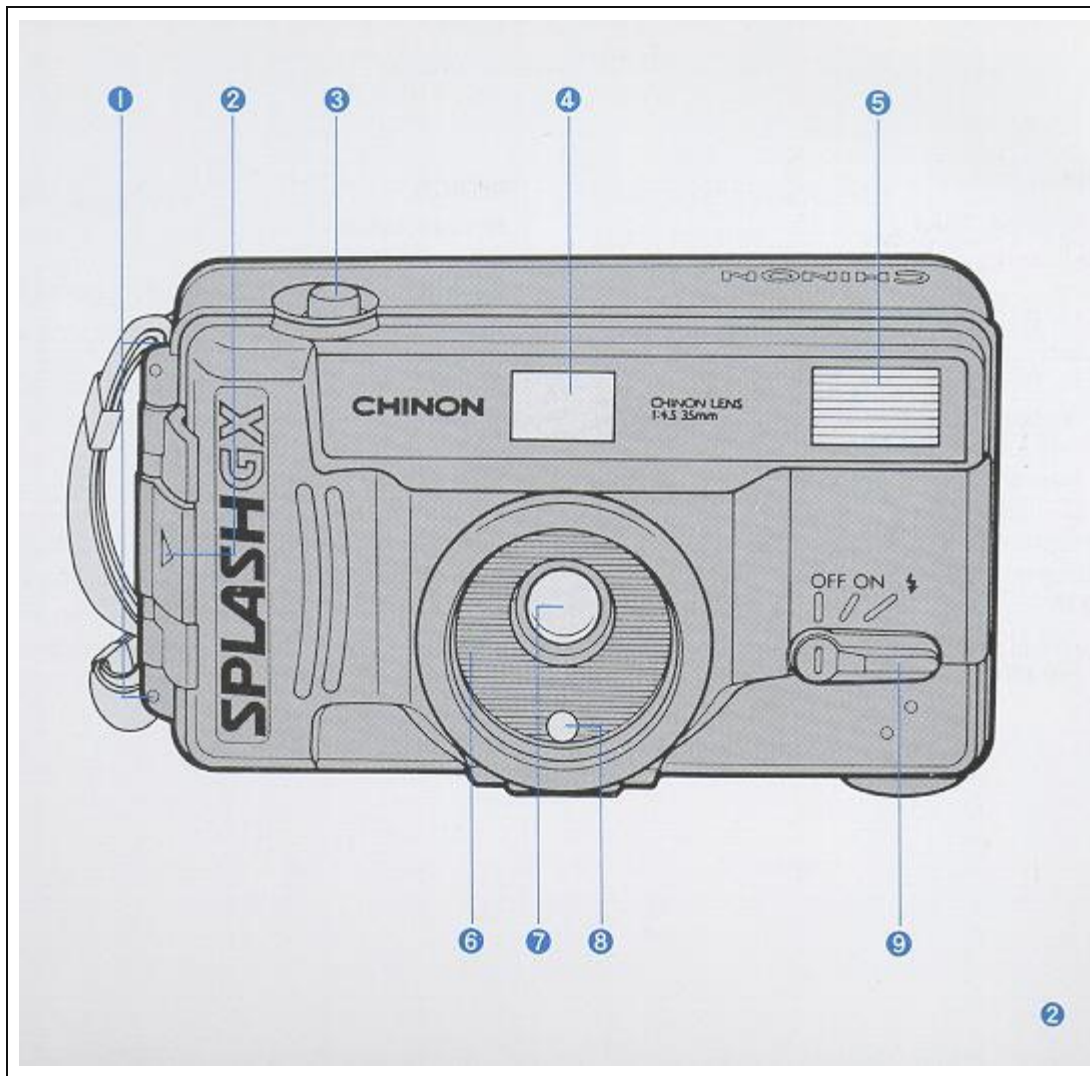
**[Back to my main Camera manual page](#)**

[www.butkus.us](http://www.butkus.us)

---

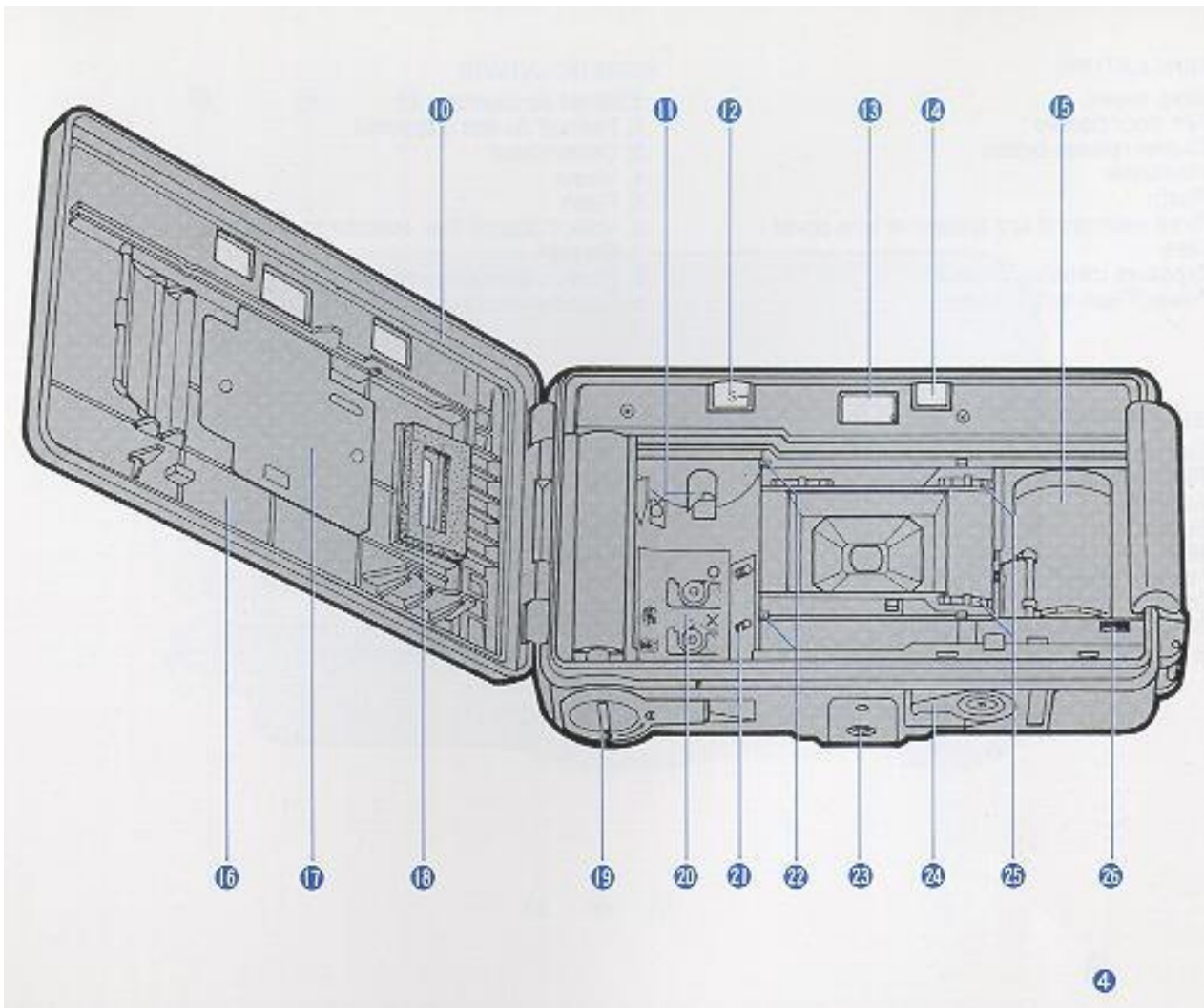


<b>TABLE OF CONTENTS</b>	
Nomenclature . 2	Holding the Camera 22
Specifications 6	Viewfinder 24
Simplified Guide for Using Your Camera 10	Waterproof Photography 26
Installing the Batteries 12	Auto-Focus Shooting 30
Battery Testing 14	Focus Lock System 34
Automatic Film Speed Setting 16	Film Rewinding 36
Automatic Film Loading 16	Flash Photography 38
	Attach Neck strap 42
	Care of the Camera 43



## NOMENCLATURE

1. Strap eyelet
2. Film door closure
3. Shutter release button
4. Autofocus window
5. Viewfinder
6. Flash
7. Fixed waterproof and protective lens cover
8. Lens
9. Exposure metering window



10. Power/Flash switch lever

11. Waterproof seal

12. Film rewind shaft

13. Frame counter

14. Viewfinder eyepiece

15. Flash ready indicator

16. Take-up spool

17. Back cover

18. Film pressure plate

19. Film type window

20. Battery cap

21. Film chamber

22. Automatic film speed setting contacts

23. Film guide

24. Tripod screw

25. Rewind switch lever

26. Sprocket

27. Film tip mark

## **SPECIFICATIONS**

**TYPE:** Weatherproof, dust and sand resistant, fully automatic 35 mm compact autofocus camera.

**PICTURE FORMAT:** 24x36 mm

**LENS:** 35 mm F3.9, 3 elements in 3 groups. **VIEWFINDER:** Albada type bright frame with AF frame, parallax marks, AF lock indication LED (green) and under exposure warning/battery check LED (red).

**SHUTTER:** Programmed electronic shutter; 1/90 sec. - 1/410 sec., mechanical release, shutter locks when the power/flash switch lever is in the OFF position.

**EXPOSURE METER:** Programmed EE, CdS. **EV RANGE:** EV10.5--EV14.5 (ISO 100).

**AUTOMATIC FILM SPEED SETTING:** The film speed is automatically set when using a OX-coded film of ISO 100/21° - 1000/31°. Non-DX film will be set to ISO 100/21°.

**FOCUSING:** Infrared automatic focusing system with possible prefocus; cancellable. **FOCUSING RANGE:** 1.3 meters (4.26 ft) to infinity

**FILM LOADING:** Auto loading system with built-in motor.

**FILM WIND:** Automatic power winder for single frame advance.

**FILM REWIND:** Automatic power rewinding; rewind actuated with rewind switch lever.

**AUTO REWIND STOP:** Film rewinding automatically stops upon completion.

**EXPOSURE COUNTER:** Indicates number of exposed frames and returns frame by frame while rewinding, and resets to "S" when camera back is opened.

**FLASH:** Fixed type electronic flash, flashmatic, Guide number 10 (ISO 100 meters), Effective range of 1.3--3.5 meters (4.26 - 11.48 ft) at ISO 100, Recycling time of approximately 5 seconds. Flash ready indicator built-in.

**WATER RESISTANCE:** Washable with water.

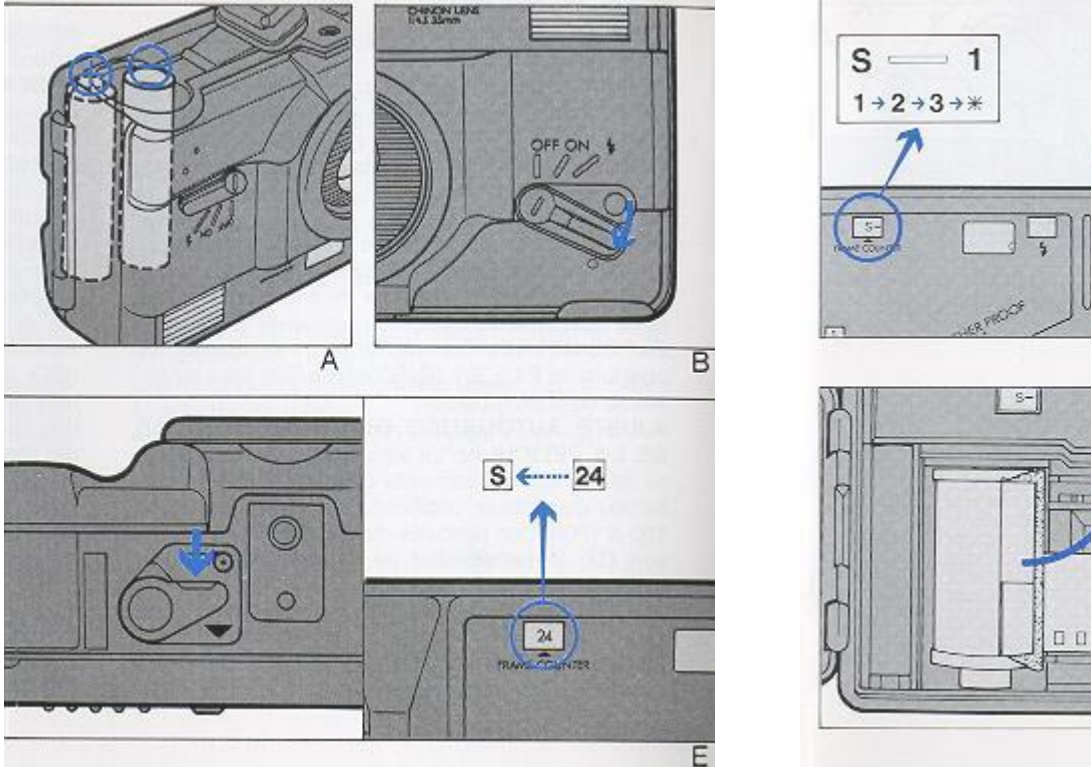
**OTHER FEATURES:** Film type window, tripod screw and neck strap.

**POWER SOURCE:** Two 1.5, V "AA" size alkaline batteries (LR6).

**DIMENSIONS:** 140(W)x 77(H) x 53(0) mm (5.51 x3.03"x2.09").

**WEIGHT:** 370 g (13.06 oz)

## SIMPLIFIED GUIDE FOR USING YOUR CAMERA

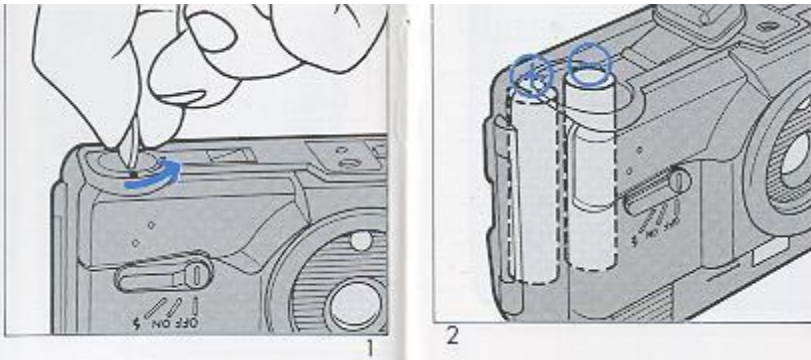


D

1. Installing Batteries (Fig. A)
2. Set the Power/Flash switch lever to the ON position (Fig. B)
3. Automatic Film Loading (Release shutter 3 times) (Fig. C)
4. Be Sure to Direct AF Frame at Your Subject (Fig. D)
5. Release the Shutter (Fig. E)
6. Automatic Film Rewind (Fig. F)
7. Remove the Exposed Film (Fig. G)



## INSTALLING THE BATTERIES



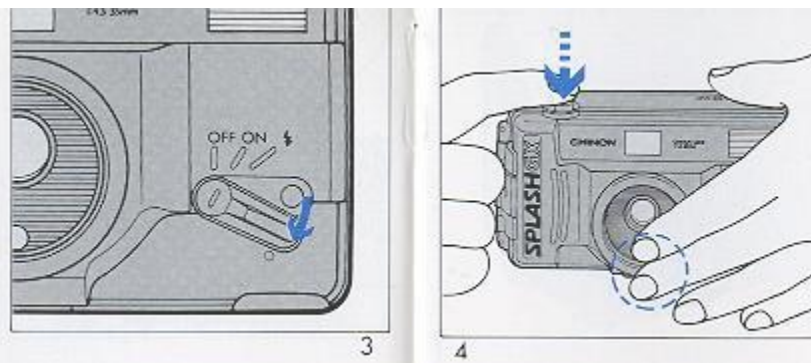
1. Put a small coin in the groove

and turn it as illustrated to open the Battery Cap (Fig. 1). Place two 1.5 V "AA" size alkaline batteries (LR-6) into the battery compartment so as to correspond with the positive (+) and negative (-) marks shown inside (Fig. 2).

### NOTE:

\* If you do not intend to use your camera for a long period of time, remove the batteries and store them in a dry location. This will prevent the possibility of battery leakage and damage to your camera.

Do not use Ni-Cad batteries. Be sure to replace both batteries at the same time when the batteries are too weak to operate the camera. When replacing the batteries, make sure they are not wet. If so, wipe it with cloth before use.



## BATTERY TESTING

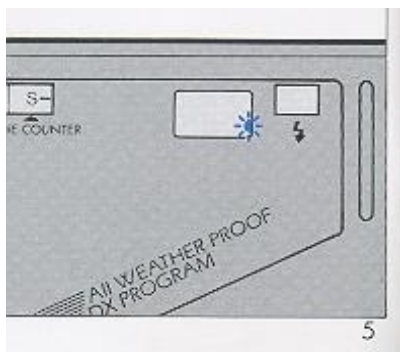
1. Set the Power/Flash Switch

Lever to the ON position (Fig. 3).

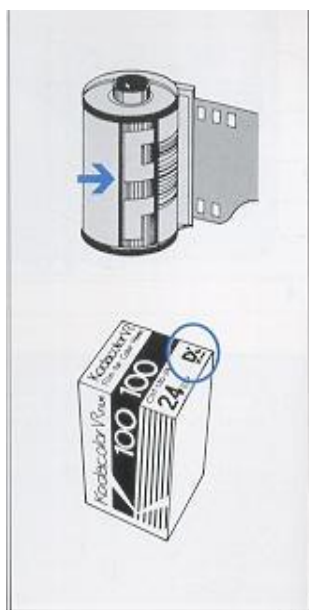
Cover the exposure metering window with your hand and press the shutter release button halfway (Fig. 4). Make sure the under-exposure warning LED (red) lights up (Fig. 5). If the red LED fails to illuminate, the batteries are too weak and need to be replaced.

### NOTE:

\* When the Power/Flash Switch Lever is in the OFF position the shutter will be blocked. As temperature decreases, especially below 0°C (32°F) battery performance declines. Keep batteries warmed under these conditions.



## AUTOMATIC FILM SPEED SETTING



6

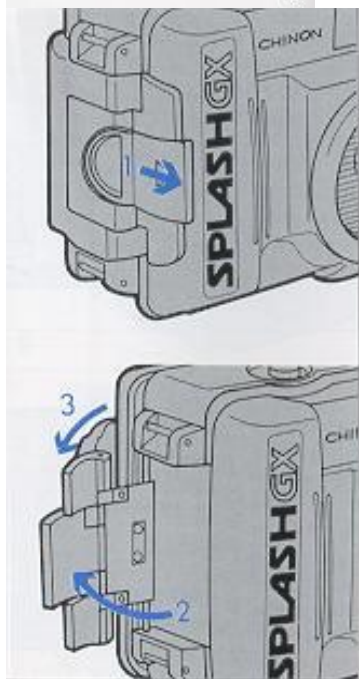
The film speed is automatically set when using a DX-coded film of

ISO 100/21° - 1000/31 Non-DX films will be set to ISO 100/21° (Fig. 6).

## AUTOMATIC FILM LOADING

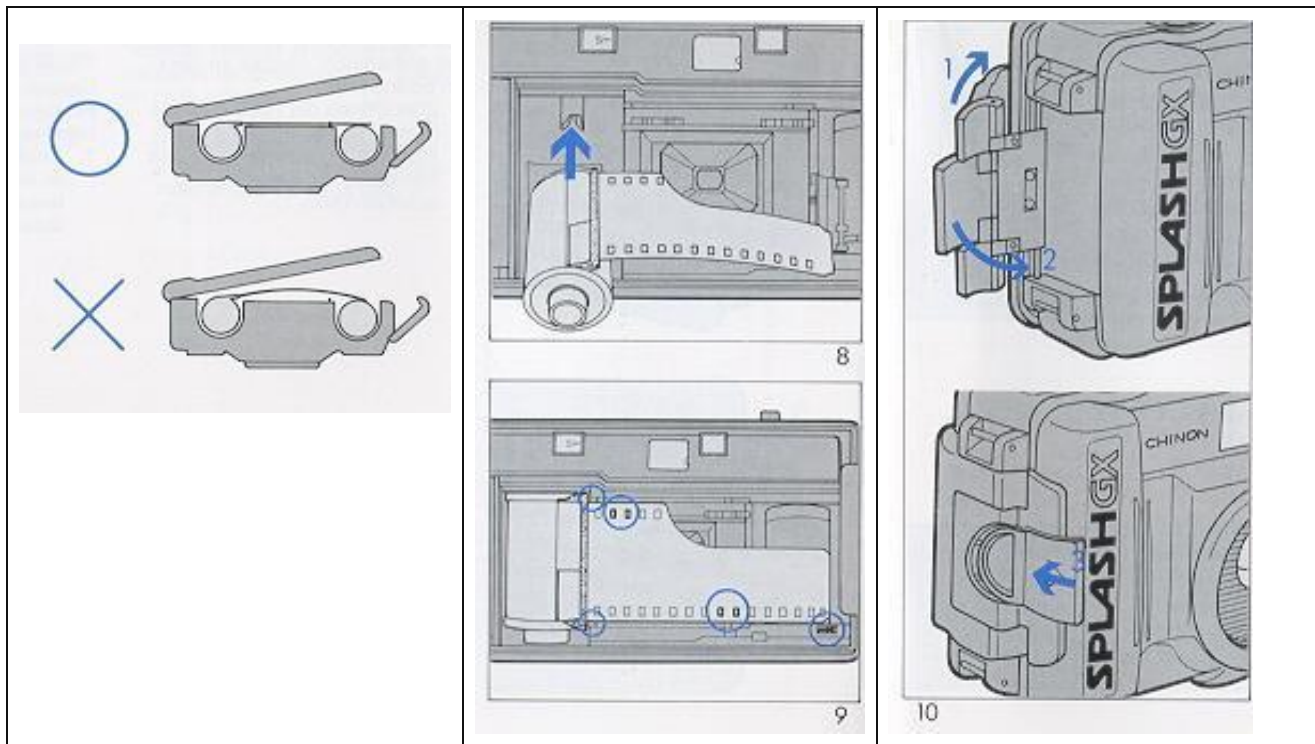
Always load and unload your camera in subdued light, and never in direct sunlight.

1. Slide the film door closure latch in the direction of the arrow and lift up the closure as illustrated to open the back cover (Fig. 7).



7

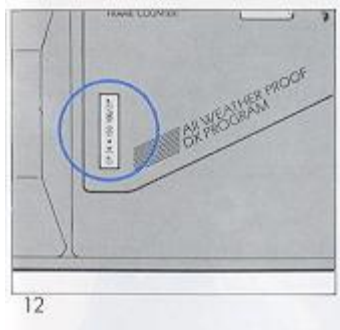
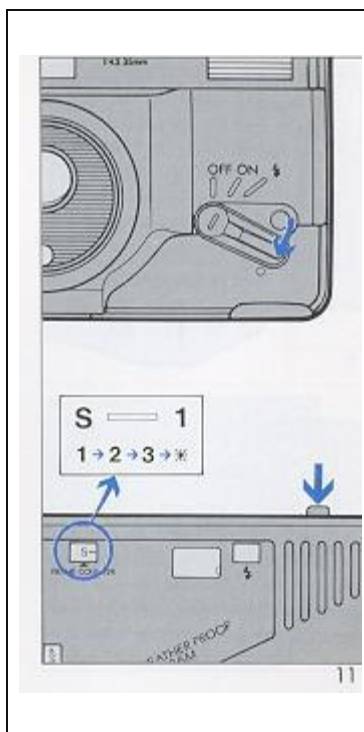




Insert a film cartridge into the film chamber (Fig. 8). Align the trimmed end of the film on the take-up spool with the yellow film tip mark.

When loading film, make sure that the film lies flat between the film guides.

Engage the perforation of the film with the teeth of the sprocket (Fig. 9). Close the back cover as illustrated (Fig. 10)



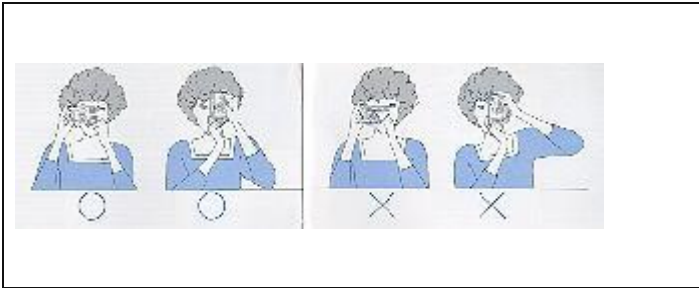
Set to the Power/Flash Switch Lever to ON position and release the shutter button three times until the figure 1" appears in the frame counter (Fig. 11). The camera is now properly loaded.

**NOTE:**

\* If the film counter does not function, the film is not properly advancing. Open the back cover and re-load the camera. When inserting film cartridge, make sure they are not wet. If so, wipe it with cloth before use.

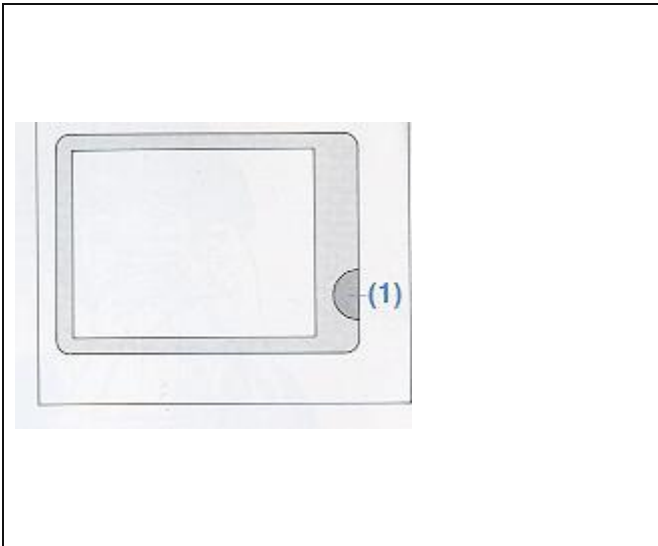
**Cartridge Window**

This camera is equipped with a convenient Cartridge Window so that you can check what type of film is in use (Fig. 12).



### HOLDING THE CAMERA

Hold the camera firmly in both hands with at least one elbow at your side to ensure camera steadiness when taking a picture.



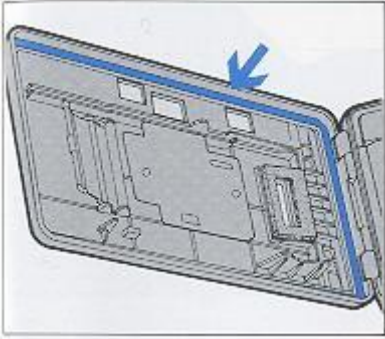
### VIEWFINDER

- (1) Bright line frame
- (2) Parallax marks
- (3) Auto-focus frame
- (4) AF indication LED (green)
- (5) Under exposure warning! Battery check LED (red)



## WATER PROOF PHOTOGRAPHY

Your SPLASH AF camera is designed to be water-resistant. It can safely be washed with water. You can use it anywhere, even on a rainy day or at the beach.

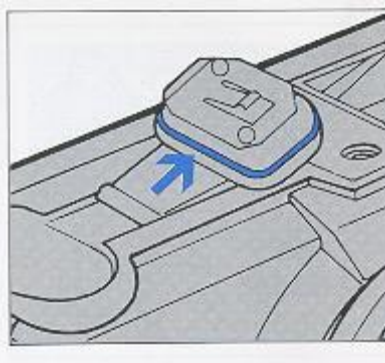


### Check Weatherproof seal

1. Make sure the weatherproof rubber seal inside is not partially or wholly removed.
2. Make sure there is no sand or foreign material on or around the weatherproof seal. If there are such foreign material on the seal, the camera might not provide its full weatherproof protection.

### NOTE:

- \* When replacing batteries and/ or inserting a film cartridge, make sure that they are not wet. If so, wipe them with a dry cloth before use.
- \* When the lens cover is covered with moisture or dirt, gently wipe with a soft cloth before taking a picture.



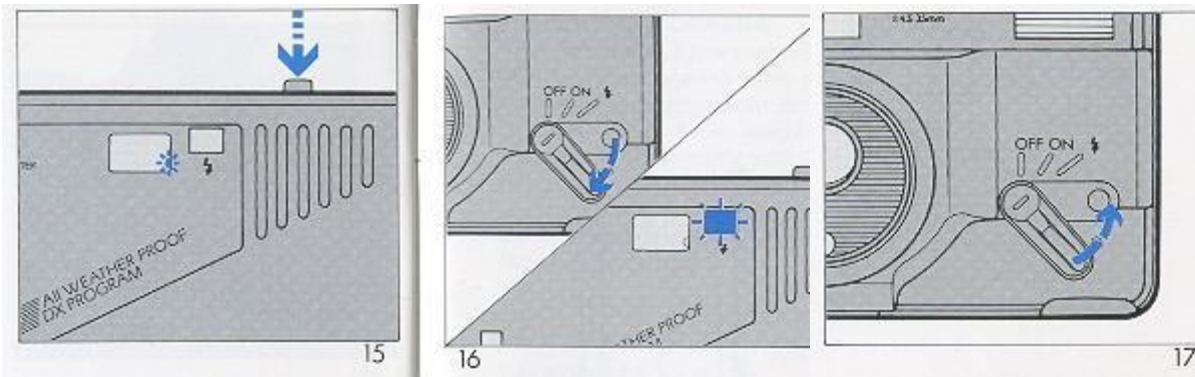
### FILM REWIND

When the film in the camera is fully exposed, the motor stops and shutter release is locked. Start rewinding at once.

1. Slide the Rewind Switch Lever in the direction of the arrow to rewind the film (Fig. 13).
2. During rewinding, the frame number counts backward showing how many frames are still remaining to be rewound.
3. When rewinding is safely completed, "S" appears in the frame counter and the motor automatically stops (Fig. 14). Open the back cover and remove the film.

**NOTE:**

When auto rewinding takes a long time to complete, replace the batteries with a fresh set.



**FLASH PHOTOGRAPHY**

Switch to flash photography if the under-exposure warning LED lights up while pressing the shutter release button halfway (Fig. 15).

1. Set the Power/Flash Switch Lever to the 4 position to turn on the flash.
2. Make sure that the Flash Ready Indicator is illuminated before taking a picture (Fig. 16).
3. When the flash is no longer required, be sure to return the power/flash switch the lever to either the ON or OFF position (Fig. 17).

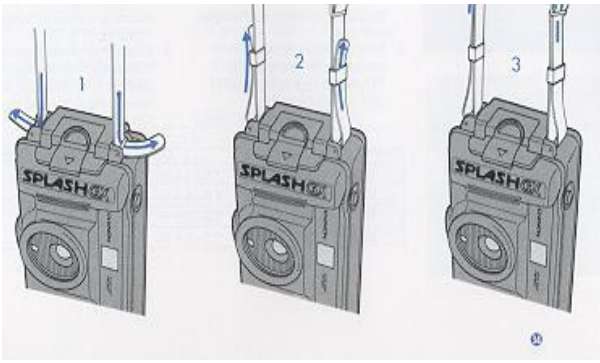
Effective Flash Distance

**ISO 100/21\*** ~L~I6--3.1 m 5.3--10 ft.

**ISO 200/24** 1.6--4.4 m 5.3--14 ft.

**ISO 400/27** 1.3--3.5 m 4.3--11 ft.

**ISO 1000/31 1.3--5.6 m 4.3--18 ft.**



## **CARE OF THE CAMERA**

Your camera is a precision instrument. When used with care it will provide years of trouble-free service. Protect your camera from dirt, rain, dampness and excessive heat. Avoid touching the lens. To clean the lens, wipe it gently with a soft lintless cloth or tissue. Do not use eyeglass tissues as they might damage the lens coating. Do not disassemble or touch the inside of the camera as possible high voltage in the flash circuitry can be dangerous.